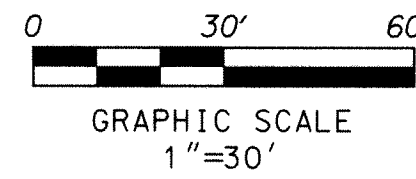
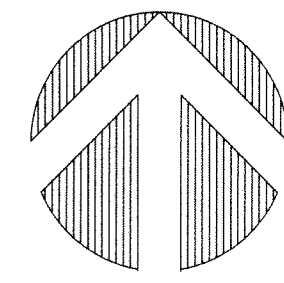


PERIMETER

SURVEYING & MAPPING
Certificate of Authorization No. LB7264
Prepared by: Jeff S. Hodapp, P.S.M.
947 Clint Moore Road
Boca Raton, Florida 33487
Tel: (561) 241-9988
Fax: (561) 241-5182



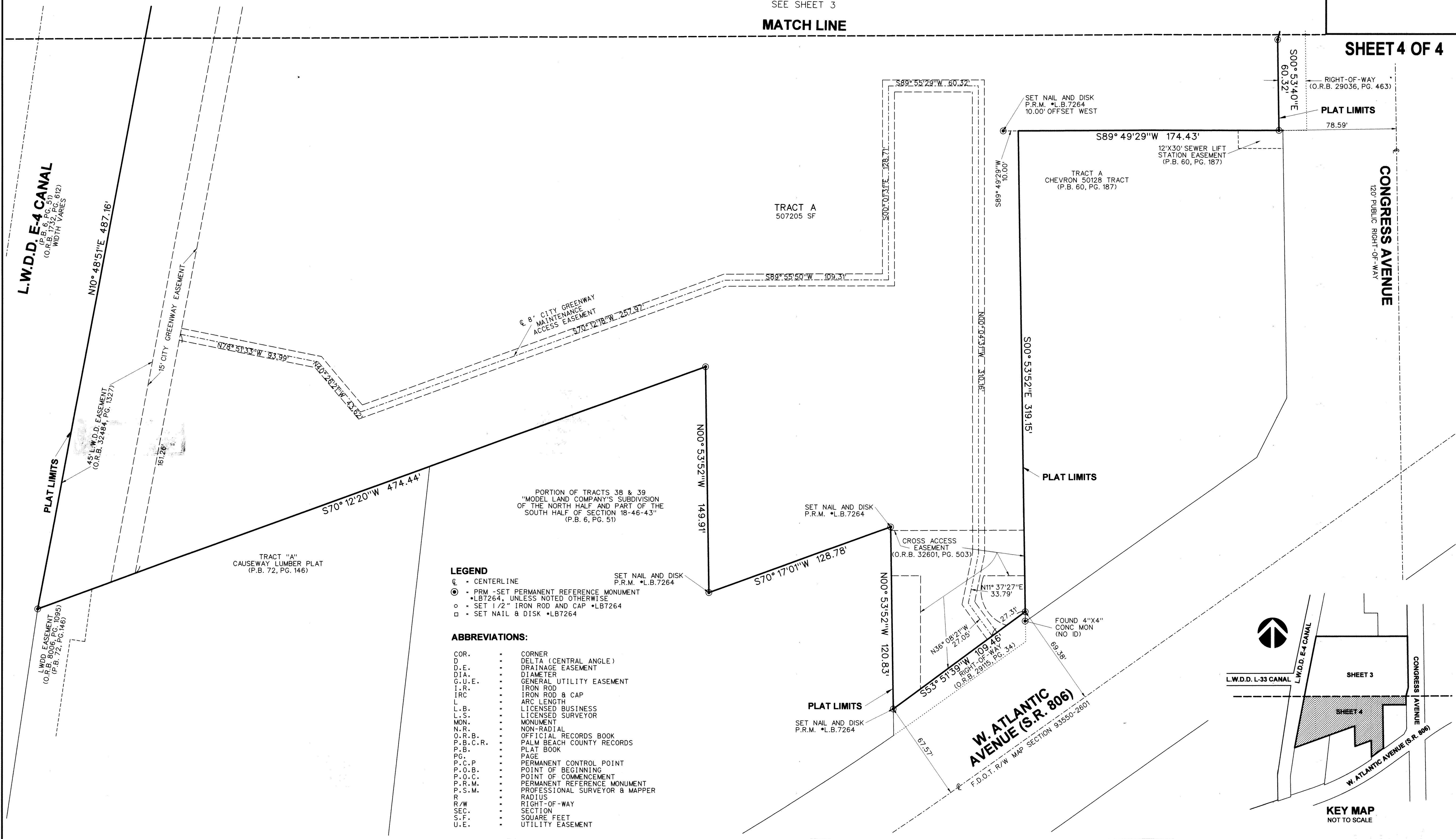
AURA DELRAY BEACH

A REPLAT OF A PORTION OF TRACTS 27, 38 AND 39, "MODEL LAND COMPANY'S SUBDIVISION OF THE NORTH HALF AND PART OF THE SOUTH HALF OF SECTION 18-46-43", (P.B 6, PG. 51, P.B.C.R.), IN SECTION 18, TOWNSHIP 46 SOUTH, RANGE 43 EAST, DELRAY BEACH, PALM BEACH COUNTY, FLORIDA.

181

SEE SHEET 3
MATCH LINE

SHEET 4 OF 4



PORTION OF TRACTS 38 & 39
"MODEL LAND COMPANY'S SUBDIVISION
OF THE NORTH HALF AND PART OF THE
SOUTH HALF OF SECTION 18-46-43"
(P.B. 6, PG. 51)

LEGEND

- ⊕ - CENTERLINE
- ⊙ - PRM - SET PERMANENT REFERENCE MONUMENT
•LB7264, UNLESS NOTED OTHERWISE
- - SET 1/2" IRON ROD AND CAP •LB7264
- - SET NAIL & DISK •LB7264

ABBREVIATIONS:

- COR. CORNER
- D. DELTA (CENTRAL ANGLE)
- D.E. DRAINAGE EASEMENT
- DIA. DIAMETER
- G.U.E. GENERAL UTILITY EASEMENT
- I.R. IRON ROD
- IRC IRON ROD & CAP
- L ARC LENGTH
- L.B. LICENSED BUSINESS
- L.S. LICENSED SURVEYOR
- MON. MONUMENT
- N.R. NON-RADIAL
- O.R.B. OFFICIAL RECORDS BOOK
- P.B.C.R. PALM BEACH COUNTY RECORDS
- P.B. PLAT BOOK
- PG. PAGE
- P.C.P. PERMANENT CONTROL POINT
- P.O.B. POINT OF BEGINNING
- P.O.C. POINT OF COMMENCEMENT
- P.R.M. PERMANENT REFERENCE MONUMENT
- P.S.M. PROFESSIONAL SURVEYOR & MAPPER
- R RADIUS
- R/W RIGHT-OF-WAY
- SEC. SECTION
- S.F. SQUARE FEET
- U.E. UTILITY EASEMENT

